



# Autism Edmonton Employment Program

## DO YOU:

- Identify as neurodiverse or as an individual with a disability?
- Have the skills but struggle to move beyond the first interview?
- Want support to achieve your career goals?
- Want to access to employment, volunteer, and/or mentorship opportunities?

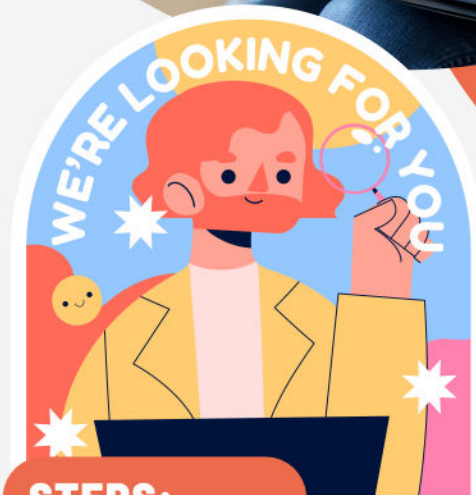
If you think you are a fit for this new program please reach out!

## CONTACT US:

 780-453-3971 Ext. 231

 [employment@autismedmonton.org](mailto:employment@autismedmonton.org)

 [www.autismedmonton.org](http://www.autismedmonton.org)



## STEPS:

- Interview
- Assessment
- Acceptance into Program
- Training
- Company Search - Match with Employer

## INTAKES NOW OPEN